

Laerdal Global Health is a not-for-profit company dedicated to helping save the lives of mothers and newborns, through collaborative design processes and partnerships with leading global health organizations.

**Our goal is to help save 1,000,000 more lives per year by 2030.**

# Helping Babies Grow

A bundle of training and therapy products aiming to help save lives of newborns, especially low birth weight babies through breastfeeding and skin-to-skin.





# Helping Babies Grow

Prematurity is the major cause of newborn death and disability globally. Each year, preterm complications account for nearly 1 million deaths, often from preventable causes (Lancet, 2021). Skin-to-skin, proper feeding and infection prevention, also known as Kangaroo Mother Care (KMC), can avert about 40% of all neonatal deaths. WHO and UNICEF endorse KMC and recommend breast milk cup feeding to newborns with breastfeeding difficulties in low-resource settings.

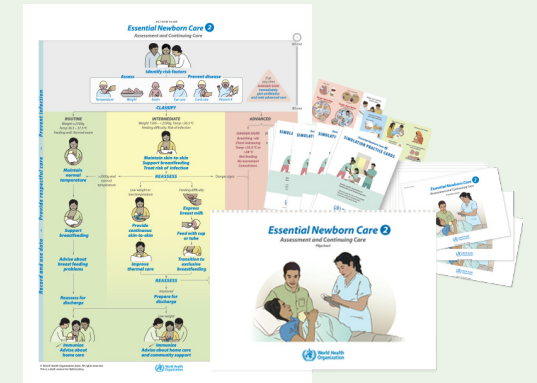
A recent WHO study showed that implementing KMC **immediately** after birth (iKMC) had the potential of saving up to 150,000 more lives each year compared to starting KMC after the baby was stable. Additionally, earlier initiation of KMC improved uptake of breastfeeding, further preventing newborn deaths. As of 2022, WHO's recommendations for care of preterm or low birth-weight infants prescribes immediate KMC whenever possible.

This bundle of training and therapy solutions aims to help save the lives of preterm and low birth-weight babies and enable care providers and families to take up these lifesaving practices.

## Essential Newborn Care

Developed by the American Academy of Pediatrics and WHO, the Essential Newborn Care course trains providers to perform critical interventions for all newborns after birth.

Essential Newborn Care I (ENC I) focuses on immediate care and helping babies breathe while Essential Newborn Care 2 (ENC 2) focuses on assessment and continued care for the sick and small newborn.



## Breastfeeding Series

Co-funded by Laerdal Foundation, Global Health Media has developed clear, engaging and practical action videos to teach breastfeeding practices at scale.



### Nifty Feeding Cup

Designed in collaboration with PATH, Univ. of Washington and Seattle Children's Hospital, a feeding cup for providing breast milk to infants with breastfeeding difficulties.



### CarePlus Preterm Wrap

A preterm wrap designed to help mothers provide continuous quality KMC both in facilities and after discharge.



### MamaBreast Breastfeeding Simulator

A water-filled simulator that allows for realistic breast milk expression, practicing correct breastfeeding and KMC.



### PremieNatalie Preterm Simulator

A realistic preterm simulator that supports training in skin-to-skin, nasogastric tube placement, and breast, cup, and nasogastric tube feeding.